



DEPARTMENT OF MENTAL HEALTH

Sarah Squirrell, Commissioner
Mourning Fox, Deputy Commissioner

OUTLINE OF PRESENTATION

Collaboration with Law Enforcement

Brattleboro Retreat Update

Vision 2030 Implementation

COLLABORATIONS WITH LAW ENFORCEMENT AND CRIMINAL JUSTICE SYSTEM

- Mental Health Crisis Specialist – Partnership with Vermont State Police
- Justice Reinvestment – Increasing Care Coordination with Probation/Parole and Community Providers
 - Funding Overview
 - Why It Matters
 - Policy Recommendation
 - Implementation Activities/Plan

BRATTLEBORO RETREAT UPDATE



SUSTAINABILITY PLAN –
ACTIVITY & PROGRESS TO DATE



BUSINESS RESTRUCTURING



ONGOING QUALITY &
OVERSIGHT

FUNDING & SUSTAINABILITY PLAN - BACKGROUND

- Overview of Funding to Date
- Sustainability Plan
 - The 9-point Plan that that was agreed to on behalf of AHS and BR Board outlines a “Three-Legged Stool” of sustainability focused on transformative changes for BR including:
 - Service Delivery Reconfiguration
 - Improvement to Business and Revenue Operations
 - Achievement of Organizational Efficiency
 - Clear implementation steps and measurable performance metrics to monitor progress

SUSTAINABILITY PLAN – PROGRESS TO DATE

- The State, Retreat Leadership, and the Retreat Board have been working in good faith over the past 3 months to implement a 9-point Action Plan for Sustainability. This work has advanced in the right direction, and the progress is consistent with where we would want to be. Progress highlights include:
 - ✓ **Progress on Implementation of Action Plan for Sustainability**
 - ✓ **Progress on 3rd party opportunities** – Retreat and Board are engaged and working to select and outside firm to assist in market demand analysis to attract equity and investment opportunities
 - ✓ **Strategic Business Restructuring** – Retreat and Board focusing on restructuring operations and streamlining areas of service delivery to focus on core inpatient services and reduce costs. This work aligns with the sustainability plan.
 - ✓ **Collaborative Partnership with AHS** – Retreat Leadership, Board and AHS have achieved a more transparent, productive and collaborative working relationship with shared goals and strategies to achieve them

BUSINESS RESTRUCTURING

- The Retreat leadership and BOD has been working with the VT Agency of Human Services (AHS) to develop and implement a Sustainability Plan that ensures the Retreat can continue to support our most vulnerable Vermonters.
- This sustainability work has advanced in the right direction. The Retreat will focus its clinical and financial resources on the care and services most needed in Vermont, including inpatient psychiatric and residential care. This will build a better Retreat for the future that is aligned with the Retreat's mission.
- These needed changes are part of a path forward to save the Retreat and make it a stronger, more sustainable organization in the future to preserve critically needed mental health care for children, youth and adults.
- The restructuring of the Retreat included the following programs:
 - HUB Opiate Treatment Program
 - Meadows School
 - Mulberry Bush Childcare Center

NEXT STEPS

✓ Continued work on the Sustainability Plan and High Priority Action Items

- AHS and BR Teams are meeting on a bi-monthly basis to execute and monitor the Action Plan strategies. Working sessions for specific Action Plan items are ongoing.

✓ Continued work on Quality Oversight Measures

AHS and Retreat continue to work on implementing quality oversight measures to be implemented by the Brattleboro Retreat under the oversight of DMH as outlined in H.960



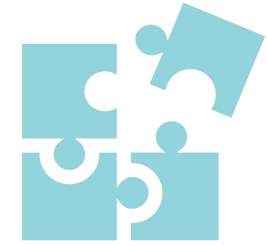
VISION 2030: 10-YEAR PLAN



Vision and actionable plan to achieve a coordinated, holistic and integrated system of care



Informed by direct input from hundreds of residents and stakeholders




Weaves the health needs of Vermonters into actionable strategies for taking policy into practice

VISION 2030

ALIGNING STRATEGIES FOR PROGRESS

8 ACTION AREAS

 **Improving Health of Populations** → **Action Area 1:** Promoting Health and Wellness

 **Reducing Costs of Care** → **Action Area 2:** Influencing Social Contributors to Health

 **Improving Health of Populations** → **Action Area 3:** Eliminating Stigma and Discrimination

 **Improving Client Experience** → **Action Area 4:** Expanding Access to Community-based Care

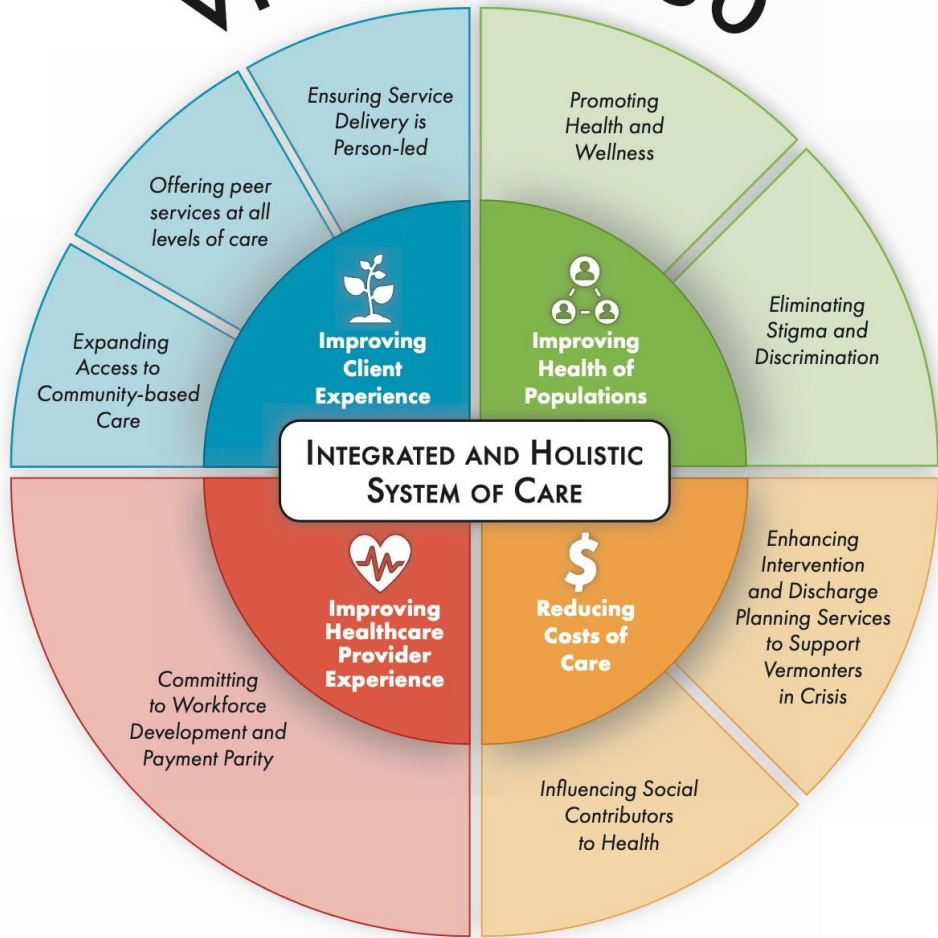
 **Reducing Costs of Care** → **Action Area 5:** Enhancing Intervention and Discharge Planning Services to Support Vermonters in Crisis

 **Improving Client Experience** → **Action Area 6:** Peer Services Are Accessible At All Levels Of Care

 **Improving Client Experience** → **Action Area 7:** Ensuring Service Delivery is Person-led

 **Improving Healthcare Provider Experience** → **Action Area 8:** Committing to Workforce Development and Payment Parity

VISION 2030



MENTAL HEALTH INTEGRATION COUNCIL

IMPLEMENTING VISION 2030:
A 10-YEAR PLAN FOR AN INTEGRATED AND HOLISTIC
SYSTEM OF CARE

THE COUNCIL MAY CREATE SUBCOMMITTEES COMPRISING THE COUNCIL'S MEMBERS FOR THE PURPOSE OF CARRYING OUT THE COUNCIL'S CHARGE.

The Commissioner Of Mental Health Shall Call The First Meeting Of The Council.

- (2) The Commissioner Of Mental Health Shall Serve As Chair. The Commissioner Of Health Shall Serve As Vice Chair.
- (3) The Council Shall Meet Every Other Month Between January 15, 2021 And January 1, 2023.
- (4) The Council Shall Cease To Exist On July 30, 2023.

On Or Before December 15, 2021, The Commissioners Of Mental Health And Of Health Shall Report On The Council's Progress To The Joint Health Reform Oversight Committee.

On Or Before January 15, 2023, The Council Shall Submit A Final Written Report To The House Committee On Health Care And To The Senate Committee On Health And Welfare With Its Findings And Any Recommendations For Legislative Action, Including A Recommendation As To Whether The Term Of The Council Should Be Extended.

LEGISLATIVE CHARGE

Sec. 4. MENTAL HEALTH INTEGRATION COUNCIL; REPORT

Creation. There is created the Mental Health Integration Council for the purpose of helping to ensure that all sectors of the health care system actively participate in the State's principles for mental health integration established pursuant to 18 V.S.A. § 7251(4) and (8) and as envisioned in the Department of Mental Health's 2020 report "Vision 2030: A 10-Year Plan for an Integrated and Holistic System of Care."

The Council shall address the integration of mental health in the health care system, including:

1. identifying obstacles to the full integration of mental health into a holistic health care system and identifying means of overcoming those barriers;
2. helping to ensure the implementation of existing law to establish full integration within each member of the Council's area of expertise;
3. establishing commitments from non-state entities to adopt practices and implementation tools that further integration;
4. proposing legislation where current statute is either inadequate to achieve full integration or where it creates barriers to achieving the principles of integration; and
5. fulfilling any other duties the Council deems necessary to achieve its objectives.



CONTACT

SARAH SQUIRRELL, COMMISSIONER, SARAH.SQUIRRELL@VERMONT.GOV

MOURNING FOX, DEPUTY COMMISSIONER, MOURNING.FOX@VERMONT.GOV

Department of Mental Health

280 State Drive NOB 2 North

Waterbury, VT 05671

Phone: 802-241-0090